

Our beginning:

In mid 1981, Heinrich Rohrer and Gerd Karl Binnig were inventing the first Scanning Tunneling Microscope (STM) at the IBM Research Center in Zurich. In 1986, Binnig and Rohrer were awarded the Nobel Prize in Physics for this ground breaking invention. During the years 1983-84, Professor Arturo Baro from the Universidad Autónoma de Madrid (UAM) spent a sabbatical at IBM Zurich learning firsthand about the construction and operation of STMs. As a result, H. Rohrer delivered and installed the first STM in Spain in late 1984 for Baro's group to use.

Professor Arturo Baro's group in Madrid began working with the new instrument and soon achieved a world-wide reputation for further developing the STM. When the invention of the Atomic Force Microscope (AFM) was reported in 1986, Professor Baro's group was naturally very interested. Instead of choosing between the two emerging fields, Professor Baro's group continued in both directions, developing electronics, software and mechanics for both AFM and STM systems.



Oxidation Lithography
[P. Ares, Nanotec, Spain]

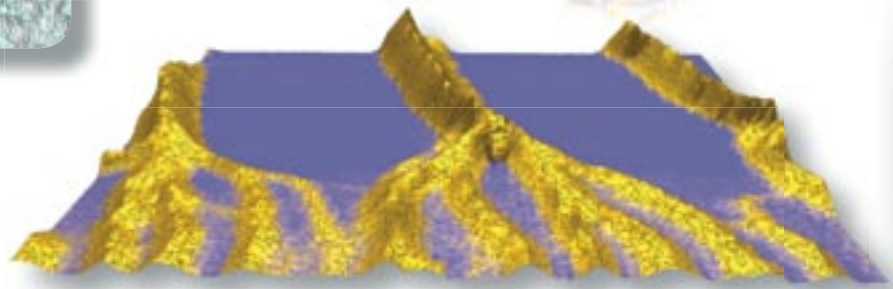
Nanotec is created:

As interest in the field of scanning probe microscopy (SPM) grew rapidly, several companies emerged to manufacture instruments. Yet, the Spanish research community found it difficult to acquire these commercially available systems due to the high prices demanded. By early 1998, Professor Baro's laboratory was already providing UAM scanning probe microscopes to other university groups throughout the world for non-profit collaboration. It was apparent that low-cost, high-quality SPMs were in high demand. Professor Arturo Baro with three researchers from UAM labs, Jaime Colchero, Julio Gomez and Jose Maria Gomez, founded Nanotec Electronica to manufacture and sell SPMs. Thus, Nanotec was created to meet the needs of the evolving SPM research community.



Carbon Nanotubes
[LNM, UAM, Spain]

Our microscopes are specifically designed to meet the ever-changing needs of a research laboratory. Versatility and precision have been goals for all of our products from the very beginning. Due to the extensive research base at UAM, our young company was quickly manufacturing highly competitive AFMs and electronics for STM control. The high quality of instrumentation resulted in outside recognition and Professor Arturo Baro was awarded the Madrid Research Prize in 1998.



Polymer Strands on glass
[S. Brown, Nanotec, USA]

Telephone: +1 (765) 420 7970
Fax: +1 (765) 420 7970
Web: www.nanotecusa.com
Info: info@nanotecusa.com

Nanotec Electronica USA, LLC
3601 Sagamore Parkway North
Suite A1
Lafayette, IN 47904
USA

Nanotec
ELECTRONICA
SPAIN USA

Nanotec Now:

Nanotec has endeavored to maintain a leading position in the SPM community by consistently distributing cutting-edge equipment of high quality with a reasonable pricing strategy. This philosophy has been coupled with innovative collaborations throughout much of the SPM community, allowing for rapid integration of new methods and techniques into the Nanotec SPM systems. This has resulted in continuous growth and world-wide sales of Nanotec's SPM systems. Nanotec's focus throughout our history has always been to provide equipment and software that will enable our clients to obtain the best data possible.



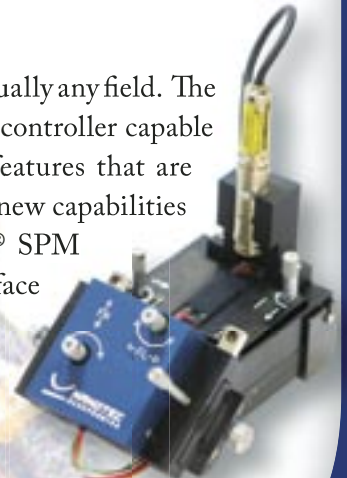
Our Software and Equipment:

Nanotec Electronica's leadership role in SPM research has been secured with the development of the WSxM software, which is still available for download free from the Nanotec Electronica web site. Nanotec has consistently focused on creating a software package useful to any SPM user and that can easily fulfill any research requirement. Our goal of versatility and precision is realized in WSxM, which has been structured to readily adapt to any experimental setup. Additionally, WSxM can read virtually every SPM file format produced world-wide, making it an excellent tool for all SPM users. WSxM's simplicity and versatility make it the most powerful SPM image processing software available.

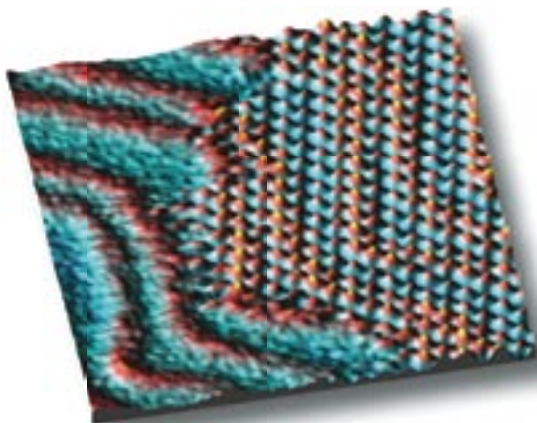
Our flexible SPM system, Cervantes®, enables SPM research in virtually any field. The heart of the Cervantes® system is Dulcinea®, a versatile electronics controller capable of operating any SPM produced. Dulcinea® incorporates all features that are expected in an SPM control system and also provides many new capabilities that enable novel SPM experiments. Our Cervantes® SPM system successfully addresses the requirements of surface science, biology, semiconductors, magnetism, and nanoscale conductivity.



Mini-Classical Chassis



SFM Head



PTCDA
[J. Méndez, ESISNA]



Optical Chassis & SFM Head

Telephone: +1 (765) 420 7970
 Fax: +1 (765) 420 7970
 Web: www.nanotecusa.com
 Info: info@nanotecusa.com

Nanotec Electronica USA, LLC
 3601 Sagamore Parkway North
 Suite A1
 Lafayette, IN 47904
 USA

Nanotec
 ELECTRONICA
 SPAIN USA